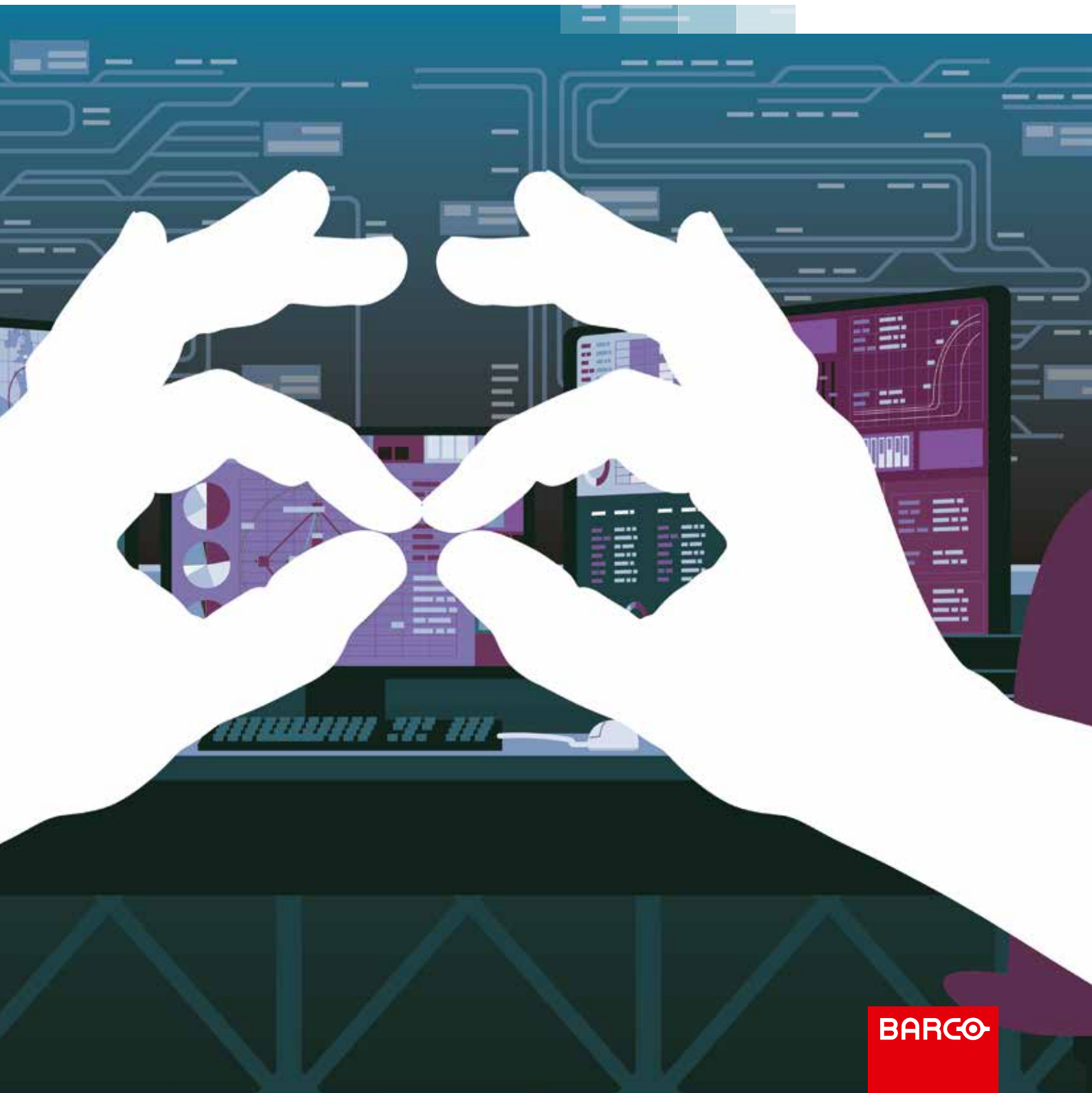


One view. Total control

Barco OpSpace



One view. Total control

Today, operators can either access only one portion of the required information, or they have to physically switch between different work stations – each with its own keyboard and mouse. Both options significantly reduce the operator's effectiveness, causing delays in assessing a situation and, potentially, bad decisions.

OpSpace, Barco's operator workspace solution, provides operators with a single, personalized, concurrent view, as well as easy access to disparate applications, remote desktops and video streams. All of these sources are composed and displayed on the 'one pixel-space' – a single high-resolution unified display surface, within which each signal is freely moveable and

sizable. Operators not only have a complete overview of the situation, but can also securely and freely interact with any of the systems, without moving their seat. This optimizes operator ergonomics and allows the operator to work in the most comfortable, intuitive and effective way.



Barco OpSpace highlights

- One integrated visualization space - 'one pixel-space'
- The 'work area' concept
- Task-oriented, intuitive user interface
- 1 keyboard/mouse/audio provides seamless control across all sources
- Integrates information coming from many disparate sources and networks
- Secure access to any application across multiple security domains
- 'Follow me' function provides all user settings upon login

One integrated view and control

Barco OpSpace is the first personal workspace that enables the operator to be more efficient by offering an integrated view, control and interaction. All relevant information can be consulted and manipulated with just one mouse and keyboard. The operator is now in the center of the information – with all data – even from secure networks – within easy reach.



All applications at hand

Barco's operator workspace solution integrates all applications into a single virtual workspace. With just one click, the operator can call any application into view – reducing navigation time and greatly improving the overview of any situation. Whenever required, the operator can create a 'perspective' of different sources by composing multiple applications or signals into one logical view.

One keyboard, mouse and audio set

Instead of using multiple work stations (each with a dedicated mouse and keyboard), OpSpace reduces desktop clutter to only one keyboard/mouse combination. This results in a much cleaner workspace, and avoids potential confusion while providing a comfortable way of working. Keyboard and mouse latency is, for all intents and purposes, not perceivable. Even the audio is fully integrated, and can be controlled per application or across the entire system.

Personal settings, at any location

Upon login, the 'Follow me' function loads the operator's personalized workspace – so, all of the operator's preferred applications and signals are loaded onto their pre-defined locations, and he or she can start working immediately, without having to adjust settings.



Future-proof concept

To ensure that the solution is future-proof, OpSpace's architecture is designed for easy expansion. OpSpace is scalable with regard to the number of required sources as well as the number of displays and amount of content on the operator's side.



Flexible and extremely robust

Because OpSpace was designed for use in control rooms, the highest possible standards were used to allow 24/7 operation in critical environments. The stability, flexibility and robustness of the system have been tested rigorously to prevent any failure.



The 'Work Area' concept

Instead of moving an operator physically to a work station to view a certain application, the 'Work Area' concept allows any application – displayed on the one pixel-space – to be copied into a work area positioned in front of the operator. The operator can then interact with the application while maintaining an overview of the other signals still present in his or her peripheral vision. After the task is done, the operator can easily remove or replace the application in the work area.

Security on every level

With OpSpace, Barco has found the perfect balance between security and fluid workflow. The system provides secure access to hosts across multiple security domains, integrating only at the presentation layer. In addition, via 'uni-directional encoders', operators are physically separated from the back-end systems that host the content. Granular access control (based on users and roles) by mission ensures that operators see only the data that are relevant to their job.

Very intuitive user interface

In a crisis situation, time is of the essence. So all of the operator's tools must be easy to use, intuitive, and extremely responsive. To meet these requirements, OpSpace uses a very intuitive, task-oriented user interface, which can be mastered in no time and operated just as quickly.

Optimally preventing disasters

The control room's primary purpose is to create an environment in which an operation can be monitored and guided perfectly. Whether distributing electricity, managing traffic, maintaining security or monitoring telecoms, the control room is always at the heart of the operation, keeping every situation under control. OpSpace creates the optimal operator environment to enable timely and effective decisions. The one pixel-space concept gives the operator a complete overview at a glance, enabling interaction with any connected application with a single mouse click.



Situational awareness, any time

Timely and effective decisions can only be taken when the operator has a complete overview of the situation. But this is very difficult to achieve when information is divided over multiple work stations; and, with one application per monitor, the number of simultaneous views is limited to the number of screens in front of the operator. With OpSpace's integrated visualization space, the operator can monitor multiple sources per display and combine different

sources in one perspective for easy interaction.

In this way, the operator environment is optimized to maintain situational awareness and facilitate timely and effective decisions.

In addition, to help operators correlate signals better, OpSpace can create composed views of several signals or applications. These composed views can be saved as perspectives.



Standard industry IP networking

The use of standard components has a number of important benefits – including cost-effectiveness and extended interoperability. Furthermore, the security of the components has been proven, and numerous third-party tools are available to prevent intrusion. So, OpSpace can interoperate with existing networks, with no need for specialized maintenance staff.

Less equipment at the workspace

The bulk of OpSpace's hardware is located in the server room – away from the control room. This means that there is less equipment at the workspace cluttering the desk, generating heat and noise, and taking up floor space. This arrangement also complies with security regulations that prescribe that hardware must be located in a separate room.

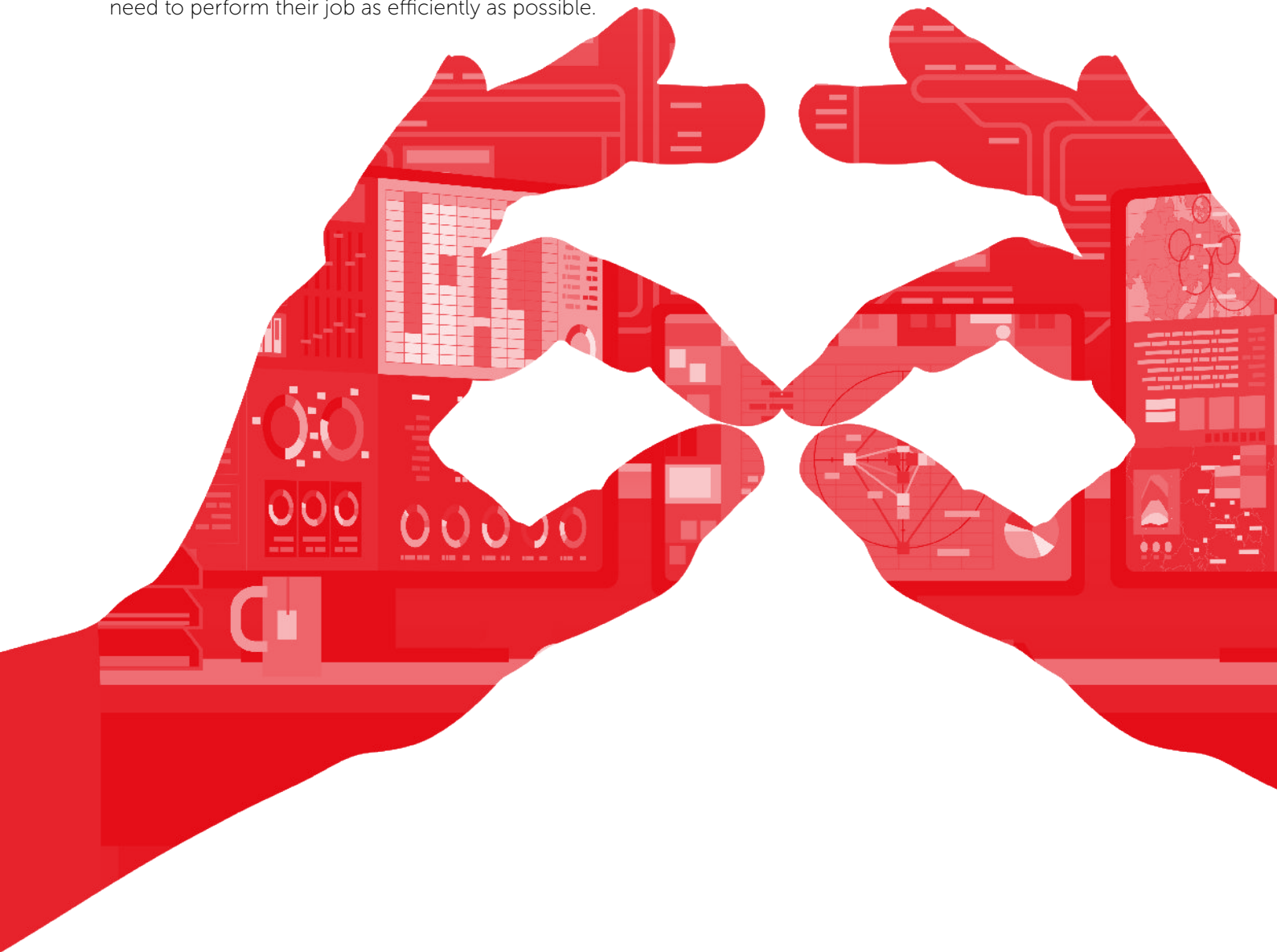
On top of any game

Every control room monitors multiple possible crisis scenarios – and each requires a different response from the operator, with his or her preferred workspace layout. Because OpSpace allows users to pre-define all screen layouts and setups, operators have their preferred layout of the situation in seconds, saving precious time.

From the control room experts

With years of expertise in providing innovative control rooms solutions, Barco is a trusted brand. Thanks to industry-leading after-sales services and project management – and our philosophy of developing universally back- and forward-compatible systems – Barco is your best choice now and in the future.

After listening to the specific needs of our global customer base, OpSpace was developed to create an operator workspace that is robust, flexible and scalable – providing operators with all the tools they need to perform their job as efficiently as possible.



M00568-R02-0517-PB | Last updated: May 2017

The information and data given are typical for the equipment described. However any individual item is subject to change without any notice. The latest version of this brochure can be found on www.barco.com. All specs mentioned in this brochure are in accordance with ISO 21118 standards.